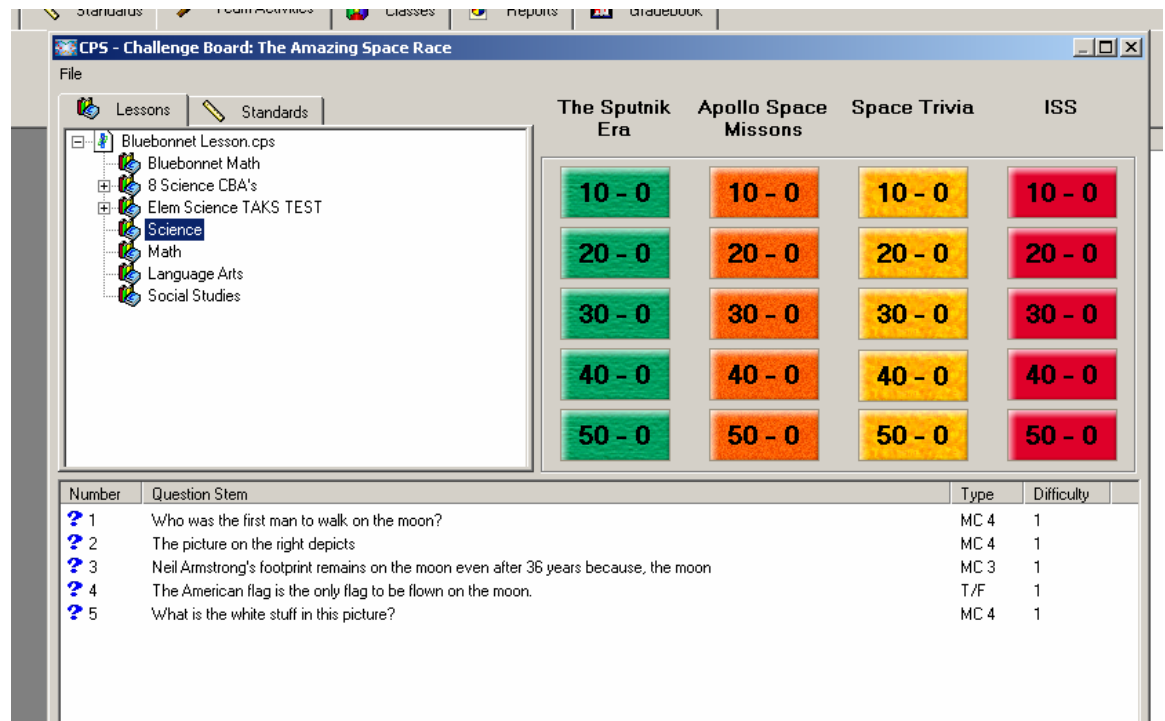


Setting Up the CPS Game Board

Setting Up the Game Board

1. Go to Start, Programs, CPS, and CPS.
2. Click on the “Team Activities” tab and then click the “New” icon.
3. Type the name for your Challenge Board along with the four categories. *You can add the four categories later if you wish. The click “OK.”
4. You will then see a screen that previews the Challenge Board and the lessons with questions that are available. Highlight the lesson you want to use.



5. The questions from that lesson will be displayed in the lower, left-hand screen. Highlight the questions one at a time and drag them to the corresponding Challenge Board button (ex: question #1 could be dragged to category 1 for 40 points).
6. Repeat step #5 until all of the questions have been put in a category place value button. You can use questions from more than one lesson by highlighting the next lesson you want to use and add the questions by repeating step 5.

7. When your Challenge Board is complete, go to “File” and “Close.”

To Play the Game Board Lesson with Your Students:

- Select your Challenge Board Activity title and then click on “Engage.”
- Then you’ll get a screen that says CPS – Session Setup. Select the session category with the pull down menu (ex: class participation, review, test, etc...) and the Class – with the pull down menu to select a specific class or use the “Default” class. Then click “Start.”
- Play the game by asking students to select a category and point value. The question will display & hit “Start” to enable the computer to detect the student responses. Hit “End” to end a question and display the correct answer. Repeat until all questions have been answered.
- Student scores will be displayed in the center of the game board by remote pad # and name (unless the Default class was used).